



Republic of the Philippines  
**Department of Education**  
REGION VIII - EASTERN VISAYAS

February 25, 2022

**REGIONAL MEMORANDUM**

No. **159**, s. 2022

**PRIORITIZATION ON THE UTILIZATION OF THE 2022 QUICK RESPONSE FUND (QRF)**

To: Schools Division Superintendents  
SGOD Chiefs  
All Others Concerned

1. Attached is OUA MEMO 00-0222-0113 dated 17 February 2022 from Usec Allain Del B. Pascua, adopting the prioritization of recipients or target schools damaged by typhoon Odette, and corresponding guidelines in the utilization of the Quick Response Fund (QRF).
2. All the details relative to the above subject are stipulated in the attached Memo.
3. Immediate dissemination of and strict compliance with this Memorandum are desired.

  
**EVELYN R. FETALVERO, CESO IV**  
Regional Director

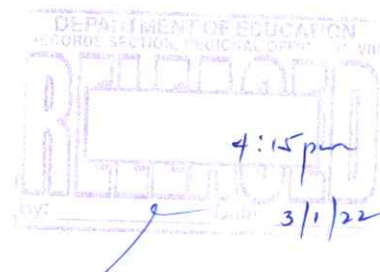
Enclosures: As stated

References: None

To be indicated in the Perpetual Index under the following subjects:

DRRM REHABILITATION QRF SCHOOL BUILDINGS

ESSD-ICC





OUAD00-0222-0 113  
To authenticate this document  
please scan the QR Code

Republika ng Pilipinas

## Kagawaran ng Edukasyon

Tanggapan ng Pangalawang Kalihim

**OUA MEMO 00-0222-0113**

### MEMORANDUM

17 February 2022

**For: Regional Directors and BARMM Education Minister  
School Division Superintendents  
ESSD and SGOD Chiefs  
DRRMS, EFD, Engineers/Architects, and DRR Coordinators**

**Subject: PRIORITIZATION ON THE UTILIZATION OF 2022 QRF**

In December 2021, Typhoon (TY) Odette caused damage to some 3,161 schools in the amount of P22,081,000,000.00 for Infrastructure, and P80,350,930,000.00 for Non-infrastructure (computers, furniture, learning resources, etc.), totaling to about P102,431,928,000.00. Attached is an Aide Memoire on the *Urgent Need to Fund the Infrastructure and Non-Infrastructure Damages of Schools Due to Various Disasters from 2016 to January 2022 (Including Ty Odette)* for easy reference.

The General Appropriations Act (GAA) of 2022, however, has only allocated P2 Billion for the Quick Response Fund (QRF) for the entire 2022 and last quarter of 2021.

With this situation, **it is most unfortunate that only less than 10% of infrastructure damage can be actually repaired and/or reconstructed by QRF 2022.** By inference, **only about 300-400 schools may be recipients of this year's QRF.** The rest will be submitted by the Disaster Risk Reduction and Management Service (DRRMS) to the National Disaster Risk Reduction and Management (NDRRM) Council for access to the NDRRM Fund, while we also wait for the approval of our request as per AM, or be included in next year's budget proposal, as we need to explore various fund sources to address the massive damage caused by TY Odette.

As such, the following prioritization of recipient/target schools is adopted for the judicious utilization of this very limited fund:

1. Schools belonging to 6th and 5th class municipalities
2. Last Mile Schools (LMS)
3. Central Elementary Schools (CES) vital to DepEd operations



### Office of the Undersecretary for Administration (OUA)

[Administrative Service (AS), Information and Communications Technology Service, Disaster Risk Reduction and Management Service (DRRMS), Bureau of Learner Support Services (BLSS), Baguio Teachers Camp (BTC), Central Security & Safety Office (CSSO)]

Department of Education, Central Office, Meralco Avenue, Pasig City  
Rm 519, Mabini Bldg.; Mobile: +639260320762; Tel: (+632) 86337203, (+632) 86376207  
Email: usec.admin@deped.gov.ph; Facebook/Twitter @depedtayo



Scan this QR Code to view  
Videos and Magazines  
of Major Programs



The rationale behind this prioritization is to give appropriate resources to schools who do not have enough resources and have no capability to repair, reconstruct, and/or rehabilitate school infrastructure damage, while providing adequate support to schools vital to DepEd operations in the area.

Moreover, the following policies are likewise adopted for the guidance of the Divisions, Regions, and the Central Office:

1. The allocation of the limited fund will be prorated in accordance with the estimated amount of damage per region and per division. However, prorating will only be applied once the priority schools mentioned above have been addressed. DRRMS and Education Facilities Division (EFD) are hereby assigned to determine these allocations with final approval from the Office of the Undersecretary for Administration (OUA);
2. The allocations must first strictly satisfy the priority recipients identified above;
3. The RADaR submissions to the DRRMS vetted by the Schools Division Superintendents (SDSes) shall be categorized by the DRRMS according to the prioritization criteria set above, together with the corresponding Program of Works (POWs) from the EFD if already available. The consolidated list will be given by the DRRMS to the SDSes for final vetting and ranking of priority schools on February 21, 2022, so that if any of those in the list cannot be accommodated within the 2 billion QRF, the EFD and the DRRMS would be able to determine which to de-list as per the ranking provided. The SDSes should submit the vetted list with the ranking of schools to the EFD and DRRMS by February 25, 2022;
4. All engineers, architects, and DRRM Coordinators are directed to immediately work out the needed POWs and required documentations for remaining schools that are in the RADaR submissions to the DRRMS which have been vetted by the SDS.
5. In addition, the SDSes should vet the RADaR list that the DRRMS have returned to them for vetting, so that the engineers, architects, and DRRM Coordinators can likewise work on the POWs and other documentary requirements.
6. All POWs for Items 4 and 5 shall be submitted by the EFD to the OUA and DRRMS on or before March 7, 2022;
7. The Regional Directors (RDs) are enjoined to evaluate thoroughly, but with dispatch, the priority lists submitted by the SDSes, ensuring that the prioritization of recipient/target schools are followed to the letter.
8. After submissions of POWs and documentations of priority schools, all engineers, architects, and DRRM coordinators must then work out the needed POWs and documentations of all other schools so that the same will be readily available for access to the NDRRM Fund which the DRRMS will begin to process, and once the requested funds under the



attached Aide Memoire is granted;

9. If the QRF allocations per region/division have adequately and satisfactorily addressed the priority schools mentioned above in their areas, and there are still remaining funds, the same may be allocated to schools with damage that affect most/many learners. The SDSes may then submit this secondary list to their RDs, and to EFD and DRRMS, for evaluation. The secondary list must indicate justification for the inclusion of the said schools. The evaluated list will then be submitted to OUA for final approval;
10. The determination of regional and division implementing policies and instructions and the identification of priority and secondary schools rests upon the RDs and the SDSes. Engineers, architects, and DRRM coordinators, for that matter, are strictly confined in providing data on the damages incurred, and in complying with the needed POWs and documentations; and
11. The DRRMS and EFD are hereby instructed to draft within ten (10) days from the issuance of this memorandum a comprehensive issuance on the scope and utilization of QRF amending DO No. 104, s. 2011 titled Guidance for the QRF, and other issuance related to QRF, given the limited amount of funds being appropriated, the massive destructions, and all other considerations, and submit the same to OUA for consideration.

Widest dissemination of this memorandum is desired in order to avoid misunderstanding and confusion in the field.

All are earnestly enjoined to completely explain to all concerned the reasons behind the priorities and policies.

For strict compliance and guidance.

  
**ALAIN DEL B. PASCUA**  
Undersecretary



OUAD00-0222-0 113  
To authenticate this document,  
please scan the QR Code.





Republika ng Pilipinas  
**Kagawaran ng Edukasyon**  
Tanggapan ng Pangalawang Kalihim

**AIDE MEMOIRE**  
17 February 2022

**URGENT NEED TO FUND DAMAGES OF SCHOOLS  
DUE TO VARIOUS DISASTERS FROM 2016 TO 2022  
(INCLUDING TY ODETTE)**

**DAMAGES OF TY ODETTE**

In December 2021, the education sector was heavily affected by Typhoon (TY) Odette. Based on the Rapid Assessment of Damages Report (RADaR) of DepEd as of 11 February 2022, a total of 3,139 affected schools incurred infrastructure damages that include totally and major damaged classrooms, amounting to **P22,081,000,000.00**.

Further, a total of 3,161 affected schools incurred non-infrastructure damages, which cover damaged school furniture, learning resources, and computer sets, amounting to **P80,350,930,000.00**. For non-infrastructure damages, the estimated cost is based on the standard price of P4,800 per unit of school furniture, P31.47 per learning resource, P820,803.56 per set of elementary DepEd Computerization Package (DCP), and P1,796,424.05 per set of secondary DCP. Validation and detailed assessments are being conducted by the DepEd Central Office and field offices.

For 2021 alone, the Department needs a total of **P102,431,928,000.00** to address the impacts of TY Odette to both infrastructure and non-infrastructure. (See **Annex A** for the Education Cluster Report for TY Odette.)

**DAMAGES OF CALAMITIES FROM 2016 TO 2022**

In addition, from 2016 to January 2022, various disasters have destroyed DepEd school buildings and facilities, with remaining unfunded repair and reconstruction amounting to **P24,014,866,986.00**. This covers a total of **13,671 classrooms for repair** and **7,347 classrooms for reconstruction**.

Including TY Odette, the total amount required for repair and reconstruction is **P46,095,866,986.23** (See **Annex B** for the total unfunded repair and reconstruction needs due to various disasters from 2016 to January 2022).



**Office of the Undersecretary for Administration (OUA)**  
*Administrative Service (AS), Information and Communications Technology Service (ICTS), Disaster Risk Reduction and Management Service (DRRMS), Bureau of Learner Support Services (BLSS), Baguio Teachers Camp (BTC), Central Security & Safety Office (CSSO)*

Department of Education, Central Office, Meralco Avenue, Pasig City  
Rm 519, Mabini Bldg.; Mobile: +639260320762; Tel: (+632) 86337203, (+632) 86376207  
Email: usec.admin@deped.gov.ph; Facebook/Twitter @depedtayo

While a total of **P82,517,450,000.00** was incurred for non-infrastructure damages for **3,884,682** damaged learning materials, **547,799** damaged school furniture, and **67,559** damaged computer packages due to various disasters from 2016-2021, excluding TY Odette.

The total amount needed for the replacement of damaged non-infrastructure, including for TY Odette is **P162,868,380,000.00** (See **Annex C** for the summary of non-infrastructure damages and estimated cost of replacement from 2016-2021).

The total amount needed for both infrastructure and non-infrastructure damages from 2016 to January 2022, including TY Odette, amounts to **P208,964,246,986.23**.

## **FUNDING OF CALAMITY DAMAGES**

Repair and reconstruction projects have been funded through the DepEd Quick Response Fund (QRF), the DepEd Basic Education Facilities Fund (BEFF), and the National Disaster Risk Reduction and Management Fund (NDRRMF).

The QRF is a P2 billion fund provided to DepEd yearly, which has been used for post-disaster repair and reconstruction. It originally amounted to P1 billion in 2016 but was removed altogether in 2017. It was restored in 2018 and increased to the current amount.

The BEFF is a programmed fund, and its allocations for repair and reconstruction in the aftermath of disasters are limited. This 2022, due to the Mandanas Ruling, the BEFF is only confined for the repair and reconstruction of schools under 5th to 6th class municipalities.

The NDRRMF is a special fund that DepEd, together with all other agencies, can avail of to finance its Comprehensive Rehabilitation and Recovery Programs (CRRP) after major disasters. After 2017, however, DepEd has been able to get only a very small amount from the NDRRMF.

All these sources of funds have been insufficient.

In every disaster, human life and physical infrastructure are the most vulnerable. In the case of DepEd, its physical properties like school buildings are constantly damaged by disasters (See **Annex D**. Usual Damages of Disasters to School Buildings and Facilities).

We are also aware that the adverse conditions we are experiencing now are very much different from the previous years due to Climate Change.

Moreover, the overloading of outdated electrical cables and devices connected with new or additional equipment provided to schools has often caused fires to old buildings.



The required funding is vital to restore normalcy, ensure learning continuity and public service, and safeguard the welfare of learners and personnel when they return to schools after the disasters.

Even in the time of the COVID-19 pandemic, schools remain central to disaster response. In the absence of other viable community or LGU facilities, a number of schools serve as COVID-19 quarantine or isolation sites and evacuation centers.

DepEd is seeking other sources of funds, but these efforts have yet to yield results. For instance, the Department already requested for a payout from the 2018 Parametric Insurance Program for government facilities procured for LGUs and DepEd, but this payment has not been made until now. In 2020, DepEd was informed that the Parametric Insurance between the Department of Finance (DOF) and Department of Budget and Management (DBM) has not been renewed.

Failure in the release of the payout happened, despite the occurrence of two disasters: the magnitude 6.1 earthquake in Zambales and Typhoon Tisoy. These events should have triggered the immediate issuance of the payout to cover the repair and reconstruction of damaged classrooms. (Please see the separate Aide Memoire on DepEd's Experience on the Parametric Insurance Coverage of Government Facilities against Natural Calamities).

## **SPECIAL FUNDING ALLOCATION**

**The Department needs a total amount of P208.96 billion to cover the remaining unfunded repair and reconstruction of damaged classrooms and replacement of damaged non-infrastructure due to various disasters from 2016 to January 2022.** (Please see **Annex E** for the Summary of Funded and Unfunded Repair and Reconstructions of Damaged Classrooms Due to Various Disasters from 2016 to January 2022).

In order to address this need, **it is proposed that a Special Calamity Fund or a Supplemental Budget be initiated and legislated** to cover not just DepEd's needs but other government agencies' in order to move forward.

Furthermore, DepEd is proposing the increase of its annual QRF from **P2 billion to P6 billion**. Since QRF 2022 is about to be fully allotted to cover TY Odette damages, the rest of 2022 is left with no more QRF with the typhoon season yet to come. It is also proposed that the proposed Special Calamity Fund or Supplemental Budget include at least P4 billion of new QRF.

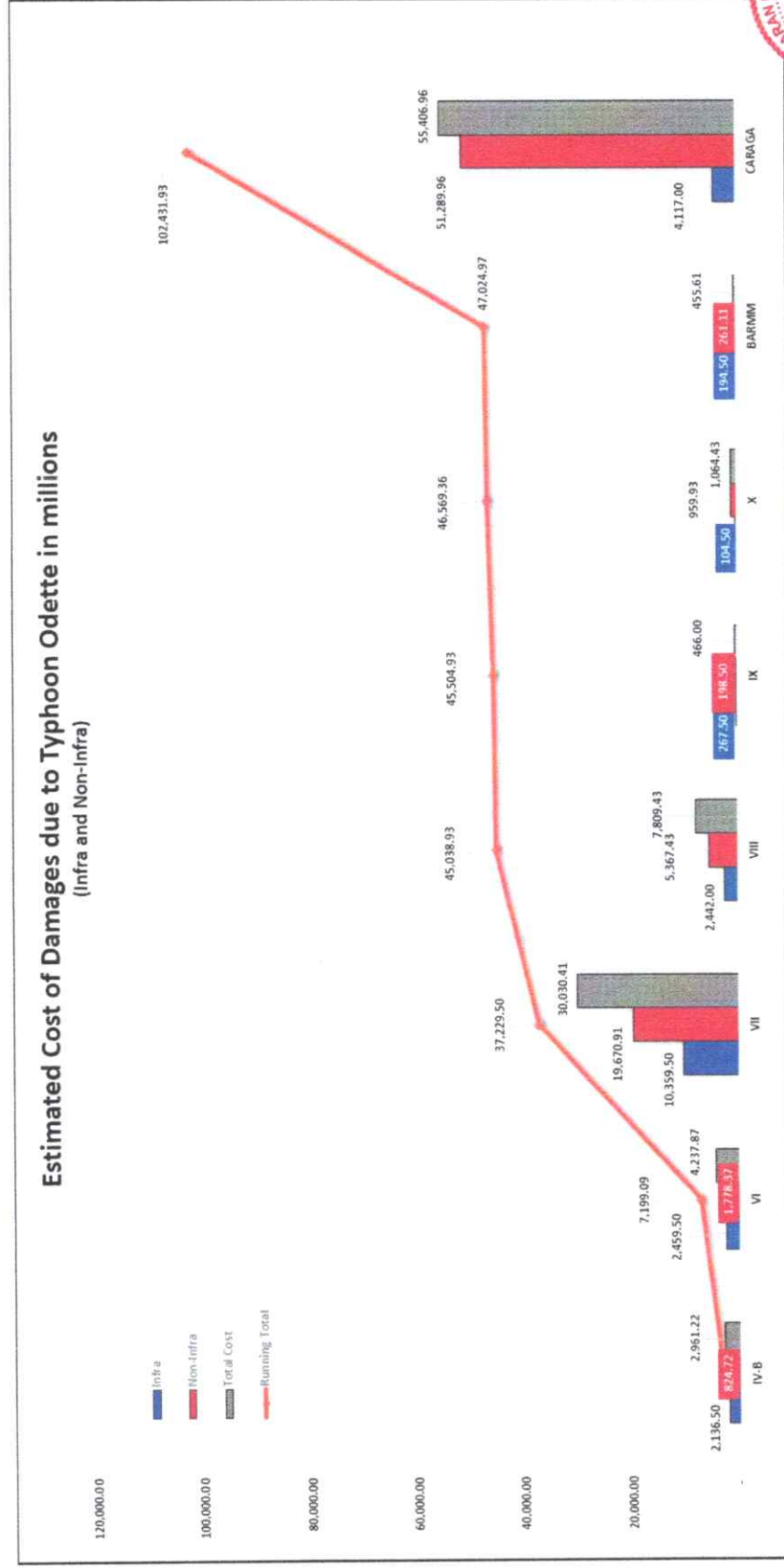
For the Secretary's consideration.

  
**ALAIN DEL B. PASCUA**  
Undersecretary



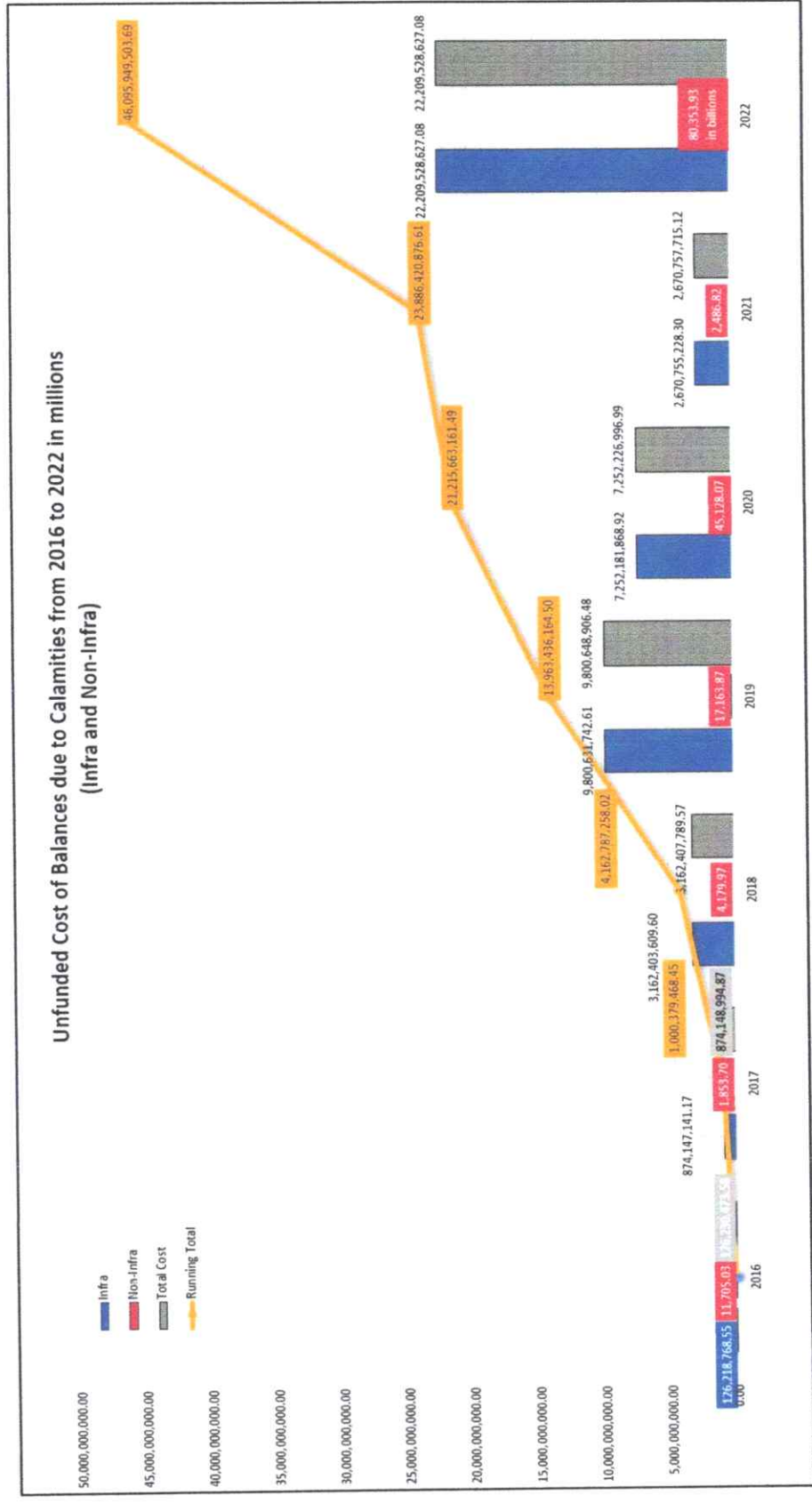
## Education Cluster Report for Typhoon Odette as of 11 February 2022

**Figure A.** Graph of Estimated Cost of Infrastructure and Non-Infrastructure Damages due to Super Typhoon Odette





**Figure B.** Graph of Unfunded Cost of Balances due to Calamities from 2016 to 2022 including Super Typhoon Odette



## Annex A

### Summary of Infrastructure and Non-Infrastructure Damages and Estimated Cost of Repair, Reconstruction and/or Replacement Including TY Odette

A total estimated cost for the repair and reconstruction of infrastructure damages, including those caused by Typhoon Odette, amount to **more than P22 billion** while the total estimated cost for non-infrastructure damages is **more than P80 billion** as shown in the following tables.

**Table 1. Summary of Infrastructure Damages and Estimated Cost of Repair and Reconstruction including TY Odette**

No.	Region	Divisions	No. of Schools with Damages	No. of Totally Damaged Classrooms	Estimated Cost** (Recon) P in million	No. of Partially Damaged Classrooms (Major)	Estimated Cost*** (Rehab / Major Repair) Ph in million	Total Estimated Cost (Recon + Rehab) P in million
1	BARMM	1	12	63	157.50	74	37	194.50
2	CARAGA	10	522	1,171	2,927.50	2,379	1,189.50	4117
3	IV-B	2	171	540	1,350	1,573	786.50	2,136.50
4	VI	17	455	762	1,905	1,109	554.50	2,459.50
5	VII	18	1,532	3,005	7,512.50	5,694	2847	10,359.50
6	VIII	8	386	616	1540	1,804	902	2442
7	IX	1	28	85	212.50	110	55	267.50
8	X	4	33	33	82.50	44	22	104.5
<b>Grand Total</b>	<b>8</b>	<b>61</b>	<b>3,139</b>	<b>6,275</b>	<b>15,687.50</b>	<b>12,787</b>	<b>6,393.50</b>	<b>22,081</b>

Source: Rapid Assessment of Damages Report 1 (RADaR 1) as of February 11, 2022, 1200H subject to validation and detailed assessment

\*Detailed list in Annex 5

\*\*Estimated Cost for Totally Damaged CL – P 2,500,000

\*\*\*Estimated Cost for Partially (Major) Damaged CL – P 500,000

NOTE: Minor damages reported by schools were not reflected in this report since the source of funds to repair the damages will be charged to the school's MOOE.



**Table 2. Summary of Non-Infrastructure Damages and Estimated Cost of Replacement\* Including TY Odette**

No.	Region	Divisions	No. of Schools with Damages	(A) No. of Damaged School Furniture	Estimated Cost of Damaged School Furniture (P in Millions) *	(B) No. of Damaged Learning Materials	Estimated Cost of Damaged Learning Material (P in Millions) **	(C) No. of Damaged Computer Sets - ES	Estimated Cost of Damaged Computer Sets-ES (P in Millions) ***	(D) No. of Damaged Computer Sets - SS	Estimated Cost of Damaged Computer Sets-SS (P in Millions) ****	(A+B+C+D) (P in Millions) *****
1	BARMM	1	29	2,389	11.47	33,331	1.05	84	68.95	100	179.64	261.11
2	CARAGA	10	569	61,892	297.08	5,386,533	169.51	53,158	43,632.28	4,003	7,191.09	51,289.96
3	IV-B	2	105	3,544	17.01	1,402,969	44.15	173	142.00	346	621.56	824.72
4	VI	17	404	74,187	356.10	786,057	24.74	326	267.58	629	1,129.95	1,778.37
5	VII	16	1,595	91,854	440.90	9,367,386	294.79	13,402	11,000.41	4,417	7,934.81	19,670.91
6	VIII	9	412	17,534	84.16	3,689,365	116.10	1,616	1,326.42	2,138	3,840.75	5,367.43
7	IX	1	22	1,431	6.87	3,081,077	96.96	65	53.35	23	41.32	198.50
8	X	3	25	460	2.21	211,367	6.65	25	20.52	518	930.55	959.93
<b>Grand Total</b>	<b>8</b>	<b>59</b>	<b>3,161</b>	<b>253,291</b>	<b>1,215.80</b>	<b>23,958,085</b>	<b>753.96</b>	<b>68,849</b>	<b>56,511.50</b>	<b>12,174</b>	<b>21,869.67</b>	<b>80,350.93</b>

Source: Rapid Assessment of Damages Report 2 (RADaR 2) as of February 11, 2022, 1200H and subject for validation and detailed assessment  
\*Detailed list in Annex 6

\*\* (A) Estimated Cost of Damages for School Furniture - P 4,800.00

\*\*\* (B) Estimated Cost of Damages for Learning Resources (based on the average cost of learning materials across all levels, covering all subject areas) - P 31.47

\*\*\*\* (C) Estimated Cost of Damages for Computer Sets is based on an allocation of one set of DepEd Computerization Package per school, as follows: (C) DCP for

Elementary - P 820,803.56, and (D) DCP for Secondary - P 1,796,424.



**Annex B**

**Total Unfunded Infrastructure and Non-Infrastructure Damages and Estimated Cost of Repair, Reconstruction and/or Replacement Due to Various Disasters from 2016 to January 2022**

**Table 1. Total Unfunded Balance of Infrastructure Damages Due to Various Disasters from 2016 to January 2022**

YEAR	TOTAL UNFUNDED BALANCE (in Pesos)	REASONS
2016	126,218,768.55	<ul style="list-style-type: none"> <li>• <b>P1 billion QRF allocation for DepEd was not enough for all damages due to various disasters.</b></li> </ul>
2017	874,147,141.17	<ul style="list-style-type: none"> <li>• The annual P1 billion allocation for DepEd was removed. For 2017, <b>DepEd had no QRF allocation.</b></li> <li>• The unfunded projects in 2016 was not carried over in 2017 as the 2017 budget was proposed as early as May 2016.</li> <li>• BEFF is a programmed fund.</li> </ul>
2018	3,162,403,609.60	<ul style="list-style-type: none"> <li>• <b>The QRF was restored in 2018</b>, in the amount of <b>P2 billion</b>. However, <b>the amount was not even enough to accommodate all damages sustained in 2018.</b></li> <li>• The unfunded projects in 2016 and 2017 were not carried in 2018 under BEFF, as BEFF was designed to address a 5-year plan to address classroom shortage.</li> <li>• <b>Most damages in 2017 occurred after May 2017 when the 2018 budget was already submitted.</b></li> <li>• <b>BEFF fund was significantly reduced to fund free tertiary education.</b></li> </ul>
2019	9,800,631,742.61	<ul style="list-style-type: none"> <li>• <b>P 2 billion QRF allocation for DepEd was not enough for all damages due to various disasters.</b></li> <li>• <b>BEFF fund remained at significantly low levels following the previous year's budget reduction and in view of Cash-based Budgeting.</b></li> <li>• <b>Most of the damages were caused by a series of earthquakes in Mindanao during the last quarter of the year.</b></li> </ul>



YEAR	TOTAL UNFUNDED BALANCE (in Pesos)	REASONS
2020	7,252,181,868.92	<ul style="list-style-type: none"> <li>• <b>The 2020 P2 billion QRF remains insufficient</b>, especially as a portion has been used for repair and reconstruction of classrooms damaged in the previous year due to various disasters occurring in the last quarter of 2019.</li> <li>• Unfunded repair and reconstruction excluding Super Typhoon Rolly</li> </ul>
2021	2,670,755,228.30	<ul style="list-style-type: none"> <li>• <b>The 2021 P2 billion QRF remains insufficient.</b></li> <li>• Remaining unfunded repair and reconstruction due to STY Rolly, Ulysses and Quinta and other incidents</li> <li>• This amount includes damages caused by Fire Incidents, Landslide, Soil Erosion, and TY Bising</li> </ul>
2022	128,528,627.08	<ul style="list-style-type: none"> <li>• This amount includes damaged by Fire Incidents as of February 11, 2022</li> </ul>
<b>Sub-Total</b>	<b>24,014,866,986.00</b>	<b>Total unfunded from 2016-2021 excluding TY Odette</b>
2022	22,081,000,000.00	<ul style="list-style-type: none"> <li>• <b>Total amount needed for infrastructure damages due to TY Odette based on RADaR as of 11 February 2022</b></li> </ul>
<b>Grand Total</b>	<b>46,095,866,986.23</b>	<b>TOTAL UNFUNDED REPAIR AND RECONSTRUCTION FROM 2016-2021, INCLUDING TY ODETTE</b>

*This unfunded balance excludes the provisions made from the CY 2022 Quick Response Fund equivalent to P2 billion which was used to address the requirements of priority regions damaged by Typhoons Odette and Maring during the last quarter of CY 2021*



**Table 2. Total Non-Infrastructure Damages and Estimated Cost of Replacement from 2016 to 2021**

No.	Year	No. of Schools with Damages	No. of Damaged School Furniture (A)	Estimated Cost of Damaged School Furniture (P in Millions)*	No. of Damaged Learning Materials (B)	Estimated Cost of Damaged Learning Material (P in Millions)*	No. of Damaged Computer Sets - ES [C]	Estimated Cost of Damaged Computer Sets-ES (P in Millions)***	No. of Damaged Computer Sets - SS (D)	Estimated Cost of Damaged Computer Sets-SS (P in Millions)***	Estimated Cost of Damaged (A+B+C+D) (P in Millions)****
1	2016	1,815	81,968	393.45	514,426	16.19	4,683	3,843.82	4,148	7,451.57	11,705.03
2	2017	431	21,422	102.83	294,987	9.28	662	543.37	667	1,198.21	1,853.70
3	2018	1,062	24,980	119.90	94,524	2.97	2,949	2,420.55	911	1,636.54	4,179.97
4	2019	2,354	108,238	519.54	630,637	19.85	8,547	7,015.41	5,349	9,609.07	17,163.87
5	2020	2,238	110,779	531.74	1,181,57	37.18	24,684	20,260.72	13,526	24,298.43	45,128.07
6	2021	412	200,412	961.98	1,168,53	36.77	1,187	974.29	286	513.78	2,486.82
<b>Grand Total</b>		<b>8,312.00</b>	<b>547,799</b>	<b>2,629.44</b>	<b>3,884,68</b>	<b>122.25</b>	<b>42,712</b>	<b>35,058.16</b>	<b>24,887</b>	<b>44,707.61</b>	<b>82,517.45</b>

\*\* (A) Estimated Cost of Damages for School Furniture – P 4,800.00

\*\*\* (B) Estimated Cost of Damages for Learning Resources (based on the average cost of learning materials across all levels, covering all subject areas) – P 31.47

\*\*\*\* Estimated Cost of Damages for Computer Sets is based on an allocation of one set of DepEd Computerization Package per school, as follows: (C) DCP for Elementary – P 820,803.56, and (D) DCP for Secondary – P 1,796,424.05



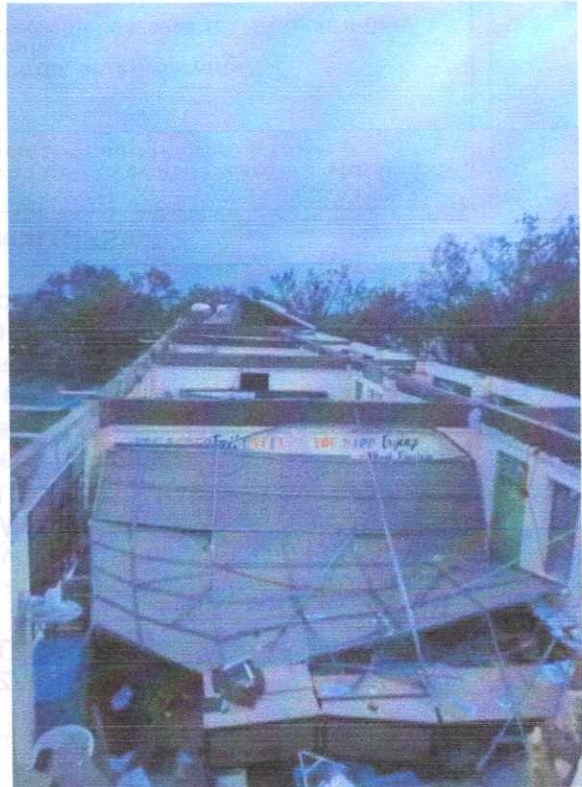
## Annex C

### Usual Damages of Disasters to School Buildings and Facilities with Sample Photos

HAZARD	USUAL DAMAGES TO SCHOOL BUILDINGS AND FACILITIES
Typhoons	<ul style="list-style-type: none"><li>• Damages on roofing structures (roofing sheet, purlins, and trusses) are usually blown away;</li><li>• Collapsed ceiling panels, supports, and frames;</li><li>• Broken window glasses and window jambs;</li><li>• Broken doors and jambs;</li><li>• Damaged/collapsed walls due to strong wind and secondary hazards brought by the typhoon such as landslides, flash floods, and debris;</li><li>• Damaged electrical wirings and fittings; and</li><li>• Damaged water pipe and fittings.</li></ul>
Earthquakes	<ul style="list-style-type: none"><li>• Cracks on major structural components of the building like beams, columns, walls, and slab/floorings;</li><li>• Disconnection of integral parts of the building such as beam and column, beam and slab;</li><li>• Collapsed ceilings, roofing structures, and flooring slab including parapets;</li><li>• Broken window glasses and jambs;</li><li>• Collapsed wall structure;</li><li>• Damaged electrical wiring and fittings; and</li><li>• Damaged the water pipes and fittings.</li></ul>
Volcanic Eruption	<ul style="list-style-type: none"><li>• Damaged roofing structures;</li><li>• Broken window glasses and jambs; and</li><li>• Broken doors and jambs.</li></ul>
Fire	<ul style="list-style-type: none"><li>• Whole building structure compromised including furniture, computers, learning materials, and equipment.</li></ul>

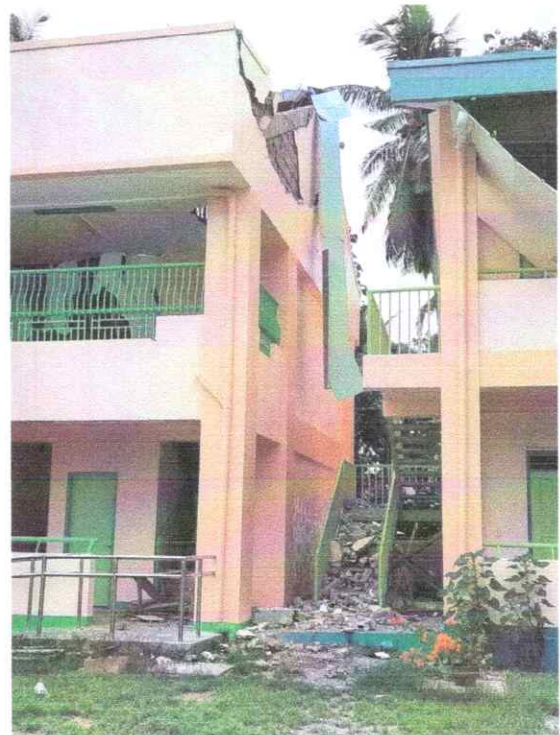


## Samples of Damages to Schools Due to TY Odette





## Samples of Damages to Schools Due to Earthquakes



## Samples of Damages to Schools due to Typhoons



## Samples of Damages to Schools due to Volcanic Eruptions



## Samples of Damages to Schools Due to Fires





Republika ng Pilipinas  
**Kagawaran ng Edukasyon**  
Tanggapan ng Pangalawang Kalihim

**AIDE MEMOIRE**  
17 February 2022

**DEPED QUICK RESPONSE FUND 2021-2022  
UTILIZATION STATUS AND 2023 PROPOSAL**

**The Department of Education (DepEd) provides the FY2021-2022 Quick Response Fund (QRF) utilization status and proposes P6 billion QRF allocation for FY2023 including revision on the QRF provision in the General Appropriations Act (GAA).**

The QRF is a stand-by fund for relief and recovery programs intended to normalize as quickly as possible the situation and living conditions of people in communities or areas stricken by disasters, calamities, epidemics, or complex emergencies<sup>1</sup>.

In 2016, the DepEd has been allocated in the GAA with P1 billion QRF for the replacement, reconstruction, rehabilitation and/or repair of school buildings and facilities. However, this allocated QRF was insufficient to cover all the damages brought about by various disasters. The DepEd QRF allocation was removed in 2017.

In 2018, the QRF of DepEd was restored and increased to the current amount of P2 billion. Since then, the P2 billion QRF remains to be included in the DepEd's GAA.

**FY 2021 DEPED QRF UTILIZATION**

The P2 billion QRF allocation of DepEd for FY2021 covers the repair and reconstruction of damaged classrooms due to Typhoon (TY) Quinta, TY Rolly, TY Ulysses, TY Tisoy, fire and other incidents. Out of the total 4,283 target classrooms in the allocation, 813 classrooms were completed, 2,614 classrooms are ongoing construction, and 856 classroom constructions are under procurement. See Annex A for the FY 2021 DepEd QRF Allocation Per Region.

<sup>1</sup> RA 10121 or the Philippine Disaster Risk Reduction and Management Act of 2010



**Office of the Undersecretary for Administration (OUA)**

*[Administrative Service (AS), Information and Communications Technology Service (ICTS), Disaster Risk Reduction and Management Service (DRRMS), Bureau of Learner Support Services (BLSS), Baguio Teachers Camp (BTC), Central Security & Safety Office (CSSO)]*

Department of Education, Central Office, Meralco Avenue, Pasig City  
Rm 519, Mabini Bldg; Mobile: +639260320762; Tel: (+632) 86337203, (+632) 86376207  
Email: usec.admin@deped.gov.ph; Facebook/Twitter @depedtayo



As of December 31, 2021, the P1,937,818,183.49 of the P2 billion FY2021 DepEd QRF allocation was already utilized. See Annex B for the Report on the Receipt and Utilization of DRRMF Sourced from GAA and Cash Donations as of December 31, 2021. Per Education Facilities Division (EFD) of DepEd, the remaining 2021 QRF amounting to P62 million comprised of P59 million which has already been obligated by DepEd field offices subject for certification of DepEd Central Office Budget Division, and the P3 million allocated for damaged learning modules and materials remains unobligated based on the validation of EFD.

### **PROGRAMMING FOR FY2022 DEPED QRF**

The Department is still finalizing the 2022 QRF allocation which shall cover the repair and reconstruction of schools affected by fire incidents, TY Maring, and TY Odette. The bulk of the P2 Billion QRF, amounting to P1.8 billion is allotted to TY Odette-affected schools. See Annex C for the Initial Listing as of February 8, 2022 for FY 2022 DepEd QRF.

### **GAPS AND CHALLENGES**

During disasters and emergencies, schools incur infrastructure and non-infrastructure damages. The P2 billion QRF allocation for DepEd is insufficient to address the repair and reconstruction of damaged classrooms and replacement of damaged non-infrastructure components of schools due to disasters for a specific year.

From 2016 to January 2022, the DepEd needs an estimated P208.96 billion to cover the infrastructure and non-infrastructure damages of schools due to various disasters.

For TY Odette alone, the DepEd needs a total of P102,431,928,000.00 to address the damages incurred, based on the Rapid Assessment of Damages Report (RADaR) as of February 11, 2022. The P20 billion is for the infrastructure damages, while the remaining P80 billion is for non-infrastructure damages. See Annex D for the Education Cluster Report for TY Odette as of 11 February 2022.

Furthermore, the COVID-19 pandemic delays the implementation of programs, projects, and activities.

### **PROPOSAL FOR FY2023 DEPED QRF**

The DepEd proposes **P6 billion QRF allocation for FY2023**. This shall cover response interventions, repair and reconstruction of school buildings and replacement of non-infrastructure components damaged due to disasters and emergencies.



In addition, below is the proposed 2023 QRF GAA provision:

“The amount appropriated herein for the Quick Response Fund (QRF) shall serve as a stand-by fund to be used for the following:

- response interventions - Temporary Learning Spaces (TLS), Learners’ Kits with hygiene supplies, Teachers’ Kits with hygiene supplies, Emergency School Feeding
- recovery interventions - replacement, reconstruction, rehabilitation or repair of school buildings and facilities, provision of slope protection for school sites, provision of temporary WASH facilities, printing and reproduction of damaged learning modules and materials, replacement of damaged school furniture, DepEd Computer Packages.

The QRF aims to bring back normalcy as quickly as possible for schools, learners and personnel affected by natural or human-induced calamities, epidemics, crises, and catastrophes, which occurred in the last quarter of the immediately preceding year and those occurring during the current year. In no case shall the QRF be used for pre-disaster activities, such as conduct of training, insurance of assets, and public information and information initiatives, or any other purpose not authorized in this act. The QRF may be used to procure response interventions for purposes of prepositioning in time for quick deployment in the aftermath of a disaster or emergency.”



Annex A

FY2021 DepEd QRF Allocation Per Region

Region	Sum of Allocation	Sum of Target Classroom	Sum of No. of CL Completed	Sum of No. of CL Ongoing	Sum of No. of CL Under Procurement	Sum of No. of CL Not yet started	Sum of No. of CL Reverted
<b>CAR</b>	68,153,242.38	84	11	73	-	-	-
<b>NCR</b>	51,374,926.85	211	202	-	9	-	-
<b>II</b>	145,883,232.98	347	26	293	28	-	-
<b>III</b>	141,138,986.88	284	132	152	-	-	-
<b>IV-A</b>	120,782,609.72	358	171	124	63	-	-
<b>IV-B</b>	201,698,607.10	491	255	236	-	-	-
<b>IX</b>	4,553,463.46	2	2	-	-	-	-
<b>V</b>	1,253,363,085.13	2,493	14	1,723	756	-	-
<b>X</b>	13,051,845.49	13	-	13	-	-	-
<b>Grand Total</b>	<b>2,000,000,000.00</b>	<b>4,283</b>	<b>813</b>	<b>2,614</b>	<b>856</b>	<b>-</b>	<b>-</b>

\* The 2021 QRF allocation covers the repair and reconstruction of the damage classrooms due to TY Quinta, TY Rolly, TY Ulysses, TY Tisoy, fire and other incidents.







**Annex B**

**Report on the Receipt and Utilization of DRRMF Sourced from GAA and Cash Donations as of December 31, 2021**

Report on the Receipt and Utilization of DRRMF Sourced from GAA and Cash Donations  
Department of Education  
As of Dec 31, 2021 (Tentative)

Report on the Receipt and Utilization of DRRMS SOURCED FROM GAA								
Date	Reference	Particulars	Balance Beginning (a)	Receipt (b)	Utilization (c)	Balance, End (d=b-c)	Disbursement (e)	Unpaid Obligation (f=c-e)
		Allotment for FY 2020 (Continuing)		163,261,223.38	109,284,809.93	53,976,413.45	68,605,727.96	40,679,081.97
	GAAAO-QRF							
		Allotment for FY 2021 (Current)		2,000,000,000.00	1,937,818,183.49	62,181,816.51	999,763,269.44	938,054,914.05
Dec 31, 2021		National Disaster Risk Reduction and Management Fund (Calamity Fund) - (Continuing)				2,850,600.00	-	-
		Special Purpose Management Fund (Calamity Fund) - (Continuing)						
						2,850,600.00		

Prepared by:  EARL B. BUNYI  
Administrative Officer IV

Certified Correct:  MA. BELEN D. MONTEVERDE  
Administrative Officer V, OIC - Budget Division

NOTE: Figures are still subject for adjustments, while waiting for the Final Consolidated SAAODB as of Dec. 31, 2021



## Annex C

## Initial Listing as of February 8, 2022 for FY 2022 DepEd QRF

REGION/DIVISION	NO. OF SITES	TARGET CL (REPAIR)	ALLOCATION (REPAIR)	TARGET CL (NC)	ALLOCATION (NC)	GRAND TOTAL
CAR	13	18	63,247,950.77	19	62,399,766.55	125,647,717.32
CARAGA	61	740	380,368,616.77	70	205,955,289.70	586,093,011.97
NCR	1	4	1,400,000.00			1,400,000.00
Region I	8	28	14,955,432.26			14,955,432.26
Region II	2	18	4,539,432.45			4,539,432.45
Region IV-B	29	220	94,392,000.00			94,392,000.00
Region IX	13	46	26,292,843.92			26,292,843.92
Region VI	112	654	226,630,572.15	15	29,036,771.53	255,667,343.68
Region VII	199	1954	608,225,375.66	6	14,989,489.52	623,214,865.18
Region VIII	51	443	224,342,768.93	6	14,779,829.58	239,122,598.51
Region X	10	33	14,714,755.37	6	13,959,999.34	28,674,754.71
<b>Grand Total</b>	<b>499.00</b>	<b>4,158.00</b>	<b>1,659,109,748.28</b>	<b>122.00</b>	<b>341,121,146.22</b>	<b>2,000,000,000.00</b>



Annex D

Education Cluster Report for TY Odette as of 11 February 2022

Summary of Infrastructure Damages and Estimated Cost of Repair and Reconstruction\*

No.	Region	Divisions	No. of Schools with Damages	No. of Totally Damaged Classrooms	Estimated Cost** (Recon) P in million	No. of Partially Damaged Classrooms (Major)	Estimated Cost*** (Rehab/ Major Repair) Ph in million	Total Estimated Cost (Recon + Rehab) P in million
1	BARMM	1	12	63	157.50	74	37	194.50
2	CARAGA	10	522	1,171	2,927.50	2,379	1,189.50	4,117
3	IV-B	2	171	540	1,350	1,573	786.50	2,136.50
4	VI	17	455	762	1,905	1,109	554.50	2,459.50
5	VII	18	1,532	3,005	7,512.50	5,694	2,847	10,359.50
6	VIII	8	386	616	1,540	1,804	902	2,442
7	IX	1	28	85	212.50	110	55	267.50
8	X	4	33	33	82.50	44	22	104.5
<b>Grand Total</b>	<b>8</b>	<b>61</b>	<b>3,139</b>	<b>6,275</b>	<b>15,687.50</b>	<b>12,787</b>	<b>6,393.50</b>	<b>22,081</b>

Source: Rapid Assessment of Damages Report 1 (RADaR 1) as of February 11, 2022, 1200H subject to validation and detailed assessment

\*Detailed list in Annex 5

\*\*Estimated Cost for Totally Damaged CL – P2,500,000.00

\*\*\*Estimated Cost for Partially (Major) Damaged CL – P500,000.00

NOTE: Minor damages reported by schools were not reflected in this report since the source of funds to repair the damages will be charged to the school's MOOE.



Annex D

Education Cluster Report for TY Odette as of 11 February 2022

Summary of Non-Infrastructure Damages and Estimated Cost of Replacement\*

No.	Region	Divisions	No. of Schools with Damages	(A) No. of Damaged School Furniture	Estimated Cost of Damaged School Furniture (P in Millions) *	(B) No. of Damaged Learning Materials	Estimated Cost of Damaged Learning Material (P in Millions) **	(C) No. of Damaged Computer Sets - ES	Estimated Cost of Damaged Computer Sets-ES (P in Millions) ***	(D) No. of Damaged Computer Sets - SS	Estimated Cost of Damaged Computer Sets-SS (P in Millions) ****	Total Estimated Cost of Replacement of Non-Infrastructure Damages (P in Millions)
1	BARM	1	29	2,389	11.47	33,331	1.05	84	68.95	100	179.64	261.11
2	CARAGA	10	569	61,892	297.08	5,386,533	169.51	53,158	43,632.28	4,003	7,191.09	51,289.96
3	IV-B	2	105	3,544	17.01	1,402,969	44.15	173	142.00	346	621.56	824.72
4	VI	17	404	74,187	356.10	786,057	24.74	326	267.58	629	1,129.95	1,778.37
5	VII	16	1,595	91,854	440.90	9,367,386	294.79	13,402	11,000.41	4,417	7,934.81	19,670.91
6	VIII	9	412	17,534	84.16	3,689,365	116.10	1,616	1,326.42	2,138	3,840.75	5,367.43
7	IX	1	22	1,431	6.87	3,081,077	96.96	65	53.35	23	41.32	198.50
8	X	3	25	460	2.21	211,367	6.65	25	20.52	518	930.55	959.93
<b>Grand Total</b>	<b>8</b>	<b>59</b>	<b>3,161</b>	<b>253,291</b>	<b>1,215.80</b>	<b>23,958,085</b>	<b>753.96</b>	<b>68,849</b>	<b>56,511.50</b>	<b>12,174</b>	<b>21,869.67</b>	<b>80,350.93</b>

Source: Rapid Assessment of Damages Report 2 (RADaR 2) as of February 11, 2022, 1200H and subject for validation and detailed assessment

\*Detailed list in Annex 6

\*\* (A) Estimated Cost of Damages for School Furniture – P4,800.00

\*\*\* (B) Estimated Cost of Damages for Learning Resources (based on the average cost of learning materials across all levels, covering all subject areas) – P31.47

\*\*\*\* (C) Estimated Cost of Damages for Computer Sets is based on an allocation of one set of DepEd Computerization Package per school, as follows: (C) DCP for Elementary – P820,803.56, and (D) DCP for Secondary – P1,796,424.05

